

# Adam



## CLP-SERIES, PANCAKE LOCK NUT CYLINDERS



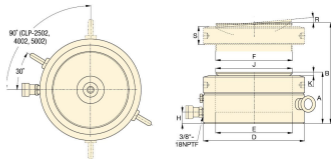
Only the extreme low height CLP-cylinder fits in this confined area to lift the construction. The V-82 needle valve is used to control cylinder speed during lifting and lowering.



Capacity:  
60 - 520 ton  
Stroke:  
45 - 50 mm  
Maximum Operating Pressure: 700 bar



- Extremely low height for use in confined areas
- Lock nut for positive and safe mechanical load holding over a long period of time
- Single-acting, load return
- Optional special synthetic coating for improved corrosion resistance and lower friction for smoother operation
- Overflow port functions as a stroke limiter
- CR-400 coupler and dust cap included on all models.



All CLP-Series cylinders include integral tilt saddles with maximum tilt angles up to 5°.

Model No	Collapsed Height A (mm)	Extended Height B (mm)	Outside Diameter D (mm)	Bore Diameter E (mm)	Plunger Diameter F (mm)	Lock Nut Height S (mm)
CLP-602	125	175	140	105,0	Tr 104 x 4	28
CLP-1002	137	187	175	136,7	Tr 136 x 6	31
CLP-1602	148	193	220	171,6	Tr 171 x 6	40
CLP-2002	155	200	245	190,7	Tr 190 x 6	43
CLP-2502	159	204	275	216,1	Tr 216 x 6	44
CLP-4002	178	223	350	266,9	Tr 266 x 6	55
CLP-5002	192	237	400	305,0	Tr 305 x 6	62

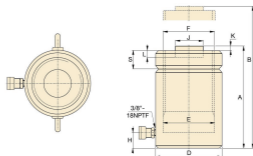
Check the Below Parameters and Confirm the Model No.  
Custom Solution for On-site Service.

Model No	Capacity ton(KN)	Stroke (mm)	Effective Area (cm <sup>2</sup> )	Oil Capacity (cm <sup>3</sup> )	Weight (kg)
CLP-602	60 (606)	50	86,6	432	15
CLP-1002	100 (1027)	50	146,8	734	26
CLP-1602	160 (1619)	45	231,3	1040	44
CLP-2002	200 (1999)	45	285,6	1285	57
CLP-2502	260 (2567)	45	366,8	1650	74
CLP-4002	400 (3916)	45	559,5	2517	134
CLP-5002	520 (5114)	45	730,6	3287	189

## CLL SERIES, HIGH TONNAGE LOCK NUT CYLINDERS



- Single-acting, load return
- Safety Lock Nut for mechanical load holding
- Special synthetic coating for improved corrosion resistance and lower friction for smoother operation
- Overflow port functions as a stroke limiter
- Interchangeable, hardened grooved saddles are standard
- CR-400 coupler and dust cap included on all models.



Capacity:  
50 - 1000 ton

Stroke:  
50 - 300 mm

Maximum Operating Pressure: 700 bar



Model No	Capacity ton(KN)	Stroke (mm)	Collapsed Height A (mm)	Extended Height B (mm)	Outside Diameter D (mm)	Bore Diameter E (mm)	Effective Area (cm <sup>2</sup> )	Oil Capacity (cm <sup>3</sup> )	Weight (kg)
CLL-502 CLL-504 CLL-506 CLL-508 CLL-5010	50 (496)	50	154	214	125	95.0	70.9	355	15
		100	214	314	125	95.0	70.9	709	20
		150	264	414	125	95.0	70.9	1064	25
		200	314	514	125	95.0	70.9	1418	30
		250	364	614	125	95.0	70.9	1773	35
		300	414	714	125	95.0	70.9	2127	40
CLL-1002 CLL-1004 CLL-1006 CLL-1008 CLL-10010 CLL-10012	100 (929)	50	187	237	165	130.0	132.7	664	30
		100	237	337	165	130.0	132.7	1327	39
		150	287	437	165	130.0	132.7	1991	48
		200	337	537	165	130.0	132.7	2654	56
		250	387	637	165	130.0	132.7	3318	64
		300	437	737	165	130.0	132.7	3981	73
CLL-1502 CLL-1504 CLL-1506 CLL-1508 CLL-15010 CLL-15012	150 (1390)	50	209	259	205	159.0	198.6	993	53
		100	259	359	205	159.0	198.6	1986	66
		150	309	459	205	159.0	198.6	2979	78
		200	359	559	205	159.0	198.6	3972	92
		250	409	659	205	159.0	198.6	4965	104
		300	459	759	205	159.0	198.6	5958	117
CLL-2002 CLL-2006 CLL-20012 CLL-2502 CLL-2506 CLL-25012	200 (1859)	50	243	293	235	184.0	265.6	1330	83
		150	343	493	235	184.0	265.6	3089	117
		300	493	793	235	184.0	265.6	7995	170
		50	249	299	275	216.0	366.1	1832	116
		150	349	499	275	216.0	366.1	5496	162
		300	499	799	275	216.0	366.1	10995	234
CLL-3002 CLL-3006 CLL-30012 CLL-4002 CLL-4006 CLL-40012	300 (3193)	50	295	345	310	241.0	456.2	2281	173
		150	395	545	310	241.0	456.2	6843	233
		300	545	845	310	241.0	456.2	13740	323
		50	335	385	350	267.0	559.9	2800	250
		150	435	585	350	267.0	559.9	8399	327
		300	585	885	350	267.0	559.9	16800	441
CLL-5002 CLL-5006 CLL-50012 CLL-6002 CLL-6006 CLL-60012	500 (5114)	50	375	425	400	305.0	731.1	3653	367
		150	475	625	400	305.0	731.1	10959	466
		300	625	925	400	305.0	731.1	21930	617
		50	395	445	430	330.0	854.8	4277	446
		150	495	645	430	330.0	854.8	12830	562
		300	645	945	430	330.0	854.8	25650	737
CLL-8002 CLL-8006 CLL-80012 CLL-10002 CLL-10006 CLL-100012	800 (8238)	50	455	505	505	387.0	1176.9	5882	709
		150	555	705	505	387.0	1176.9	17645	870
		300	705	1005	505	387.0	1176.9	35370	1110
		50	495	545	560	432.0	1466.4	7329	949
		150	595	745	560	432.0	1466.4	21986	1141
		300	745	1045	560	432.0	1466.4	43980	1430

## RSM,RCS SERIES LOW HEIGHT CYLINDERS



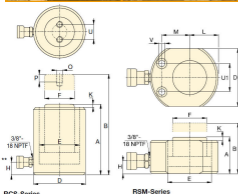
### RSM-series, Low Height Cylinders

- Compact, flat design for use where most other cylinders will not fit
- Single-acting, spring return
- RSM-750, 1000 and 1500 have handles for easy carrying
- Mounting holes permit easy fixturing
- Baked enamel finish for increased corrosion resistance
- CR-400 coupler and dust cap included on all models
- Hard chrome plated high quality steel plungers
- Grooved plunger ends require no saddle.



### RCS-series, Low Height Cylinders

- Lightweight, low profile design for use in confined spaces
- Single-acting, spring return
- Baked enamel finish for increased corrosion resistance
- Plunger wiper reduces contamination, extending cylinder life
- CR-400 coupler and dust cap included on all models
- Grooved plunger end with threaded holes for mounting tilt saddles
- Integral handle on RCS-1002 for easy carrying
- Plated steel plungers.



Capacity:  
5 - 150 ton  
Stroke:  
6 - 62 mm

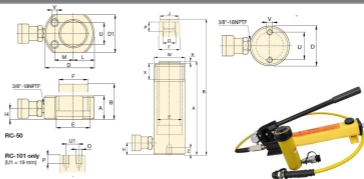
Maximum Operating Pressure: 700 bar



### Maximum Power to Height Ratio

Model No	Capacity ton(KN)	Stroke (mm)	Collapsed Height A (mm)	Extended Height B (mm)	Outside Diameter D (mm)	Bore Diameter E (mm)	Effective Area (cm <sup>2</sup> )	Oil Capacity (cm <sup>3</sup> )	Plunger Diameter F (mm)	Weight (kg)
RSM-50	5 (45)	6	32	38	58 x 41	28,7	6,5	4	25,4	1,0
RSM-100	10 (101)	12	43	54	82 x 55	42,9	14,5	18	38,1	1,4
RSM-200	20 (201)	11	51	62	101 x 76	60,5	28,7	32	50,8	3,1
RSM-300	30 (295)	13	58	71	117 x 95	73,2	42,1	55	63,4	4,5
RSM-500	45 (435)	16	66	82	140 x 114	88,9	62,1	99	69,8	6,8
RSM-750	75 (718)	16	79	95	165 x 139	114,3	102,6	164	82,6	11,3
RSM-1000	90 (887)	16	85	101	178 x 153	127,0	126,7	203	92,2	14,5
RSM-1500	150 (1386)	16	100	116	215 x 190	158,8	198,1	317	114,3	26,3
RCS-101*	10 (101)	38	88	126	69	42,9	14,5	55	38,1	4,1
RCS-201*	20 (201)	45	98	143	92	60,5	28,7	129	50,8	5,0
RCS-302*	30 (295)	62	117	179	101	73,2	42,1	261	66,5	6,8
RCS-502*	45 (435)	60	122	182	124	88,9	62,1	373	69,8	10,9
RCS-1002*	90 (887)	57	141	198	165	127,0	126,7	722	92,2	22,7

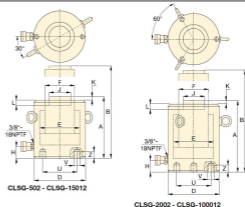
## RC SERIES DUO, SINGLE ACTING CYLINDERS



complete technical information as below:

Model No	Capacity ton(KN)	Stroke (mm)	Effective Area (cm <sup>2</sup> )	Oil Capacity (cm <sup>3</sup> )	Collapsed Height A (mm)	Weight (kg)	Cylinder Bore Dia. E (mm)	Plunger Dia. F (mm)	Base to Adv Port H (mm)	Saddle Dia. J (mm)	Saddle Protr. from Plgr. **	Base Mounting Holes			Collar Thread W	Collar Thread Length		
												Bolet Circle U (mm)	Thread V	Thd. Depth Z (mm)				
RC-50**	5 (45KN)	16	6.5	10	41	1	287	254	19	**	**	28	5,6 mm	—	—	—		
RC-51		25	6.5	16	110	1	287	254	19	25	6	25	1/4"- 20 un	14	11/2" - 16 un	28		
RC-53		76	6.5	50	165	1,5	287	254	19	25	6	25	1/4"- 20 un	14	11/2" - 16 un	28		
RC-55*		127	6.5	83	215	1,9	287	254	19	25	6	25	1/4"- 20 un	14	11/2" - 16 un	28		
RC-57		177	6.5	115	273	2,4	287	254	19	25	6	25	1/4"- 20 un	14	11/2" - 16 un	28		
RC-59		232	6.5	151	323	2,8	287	254	19	25	6	25	1/4"- 20 un	14	11/2" - 16 un	28		
RC-101		26	14,5	38	89	1,8	429	381	19	—	—	39	5/16"- 18 un	12	2 1/4" - 14	26		
RC-102*		54	14,5	78	121	2,3	429	381	19	35	6	39	5/16"- 18 un	12	2 1/4" - 14 un	26		
RC-104		105	14,5	152	171	3,3	429	381	19	35	6	39	5/16"- 18 un	12	2 1/4" - 14 un	26		
RC-106*		156	14,5	226	247	4,4	429	381	19	35	6	39	5/16"- 18 un	12	2 1/4" - 14 un	26		
RC-108	203	14,5	294	298	5,4	429	381	19	35	6	39	5/16"- 18 un	12	2 1/4" - 14 un	26			
RC-1010*	257	14,5	373	349	6,4	429	381	19	35	6	39	5/16"- 18 un	12	2 1/4" - 14 un	26			
RC-1012	304	14,5	441	400	6,8	429	381	19	35	6	39	5/16"- 18 un	12	2 1/4" - 14 un	26			
RC-1014	356	14,5	516	450	8,2	429	381	19	35	6	39	5/16"- 18 un	12	2 1/4" - 14 un	26			
RC-151	15 (142KN)	25	20,3	51	124	3,3	508	414	19	38	9	48	3/8"- 16 un	12	23/4" - 16 un	30		
RC-152		51	20,3	104	149	4,1	508	414	19	38	9	48	3/8"- 16 un	12	23/4" - 16 un	30		
RC-154*		101	20,3	205	200	5	508	414	19	38	9	48	3/8"- 16 un	12	23/4" - 16 un	30		
RC-156*		152	20,3	308	271	6,8	508	414	25	38	9	48	3/8"- 16 un	12	23/4" - 16 un	30		
RC-158		203	20,3	411	322	8,2	508	414	25	38	9	48	3/8"- 16 un	12	23/4" - 16 un	30		
RC-1510		254	20,3	516	373	9,5	508	414	25	38	9	48	3/8"- 16 un	12	23/4" - 16 un	30		
RC-1512		305	20,3	619	423	10,9	508	414	25	38	9	48	3/8"- 16 un	12	23/4" - 16 un	30		
RC-1514		356	20,3	723	474	11,8	508	414	25	38	9	48	3/8"- 16 un	12	23/4" - 16 un	30		
RC-251		26	33,2	86	139	5,9	650	572	25	50	10	58	1/2"- 13 un	19	35/16" - 12 un	49		
RC-252*		50	33,2	166	165	6,4	650	572	25	50	10	58	1/2"- 13 un	19	35/16" - 12 un	49		
RC-254*	102	33,2	339	215	8,2	650	572	25	50	10	58	1/2"- 13 un	19	35/16" - 12 un	49			
RC-256*	158	33,2	525	273	10	650	572	25	50	10	58	1/2"- 13 un	19	35/16" - 12 un	49			
RC-258	210	33,2	697	323	12,2	650	572	25	50	10	58	1/2"- 13 un	19	35/16" - 12 un	49			
RC-2510	261	33,2	867	374	14,1	650	572	25	50	10	58	1/2"- 13 un	19	35/16" - 12 un	49			
RC-2512	311	33,2	1033	425	16,3	650	572	25	50	10	58	1/2"- 13 un	19	35/16" - 12 un	49			
RC-2514*	362	33,2	1202	476	17,7	650	572	25	50	10	58	1/2"- 13 un	19	35/16" - 12 un	49			
RC-308	30 (295KN)	209	42,1	880	387	18,1	732	572	57	50	10	—	—	—	35/16" - 12 un	49		
RC-502	50 (498KN)	51	71,2	362	176	15	952	795	33	71	2	95	1/2"- 13 un	19	5" - 12 un	55		
RC-504		101	71,2	719	227	19,1	952	795	33	71	2	95	1/2"- 13 un	19	5" - 12 un	55		
RC-506*		159	71,2	1131	282	23,1	952	795	35	71	2	95	1/2"- 13 un	19	5" - 12 un	55		
RC-5013		337	71,2	2399	460	37,6	952	795	35	71	2	95	1/2"- 13 un	19	5" - 12 un	55		
RC-756		75 (718KN)	156	102,6	1601	285	29,5	1,143	952	30	71	5	—	—	—	53/4" - 12 un	44	
RC-7513			333	102,6	3417	492	59	1,143	952	30	71	5	—	—	—	53/4" - 12 un	44	
RC-1006			95	168	133,3	2239	357	59	1,303	1,049	41	71	2	140	3/4"- 10 un	25	67/8" - 12 un	44
RC-10010			260	133,3	3466	449	72,6	1,303	1,049	41	71	2	140	3/4"- 10 un	25	67/8" - 12 un	44	

## CLSG-SERIES, HIGH TONNAGE CYLINDERS



The Single-Acting Heavy Lifting Solution with Integral Stop Ring



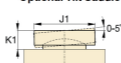
Capacity:  
50 - 1000 ton  
Stroke:  
50 - 300 mm  
Maximum Operating Pressure: 700 bar

Model No	Capacity ton(KN)	Stroke (mm)	Collapsed Height A (mm)	Extended Height B (mm)	Outside Diameter D (mm)	Bore Diameter E (mm)	Effective Area (cm <sup>2</sup> )	Oil Capacity (cm <sup>3</sup> )	Plunger Diameter F (mm)	Weight (kg)
CLSG-502	50 (539)	50	162	212	130	99.0	77.0	385	70.0	17
		100	212	312	130	99.0	77.0	770	70.0	20
		150	262	412	130	99.0	77.0	1155	70.0	23
		200	312	512	130	99.0	77.0	1540	70.0	27
		250	362	612	130	99.0	77.0	1924	70.0	31
		300	412	712	130	99.0	77.0	2309	70.0	34
		50	182	232	165	130.0	132.7	664	95.0	19
		100	232	332	165	130.0	132.7	1327	95.0	29
		150	282	432	165	130.0	132.7	1991	95.0	40
		200	332	532	165	130.0	132.7	2655	95.0	50
CLSG-1008	100 (929)	250	382	632	165	130.0	132.7	3318	95.0	61
		300	432	732	165	130.0	132.7	3982	95.0	71
		50	196	246	205	159.0	198.6	993	114.0	39
		100	246	346	205	159.0	198.6	1986	114.0	52
		150	296	446	205	159.0	198.6	2978	114.0	65
		200	346	546	205	159.0	198.6	3971	114.0	78
		250	396	646	205	159.0	198.6	4964	114.0	92
		300	446	746	205	159.0	198.6	5957	114.0	105
		50	216	266	235	184.0	265.9	1330	133.0	55
		150	316	466	235	184.0	265.9	3989	133.0	91
CLSG-2006	200 (1861)	300	466	766	235	184.0	265.9	7977	133.0	146
		50	235	285	275	216.0	366.4	1832	165.0	102
		150	335	485	275	216.0	366.4	5497	165.0	136
		300	485	785	275	216.0	366.4	10993	165.0	207
		50	312	362	310	241.0	456.2	2281	197.0	184
		150	412	562	310	241.0	456.2	6843	197.0	232
		300	562	862	310	241.0	456.2	13685	197.0	303
		50	375	425	350	267.0	559.9	2800	216.0	270
		150	475	625	350	267.0	559.9	8399	216.0	330
		300	625	925	350	267.0	559.9	16797	216.0	421
CLSG-5002	500 (5114)	50	419	469	400	305.0	730.6	3653	248.0	401
		150	519	669	400	305.0	730.6	10959	248.0	480
		300	669	969	400	305.0	730.6	21918	248.0	599
		50	429	479	430	330.0	855.3	4276	267.0	474
		150	529	679	430	330.0	855.3	12829	267.0	565
		300	679	979	430	330.0	855.3	25659	267.0	701
		50	474	524	505	387.0	1176.3	5881	317.0	741
		150	574	724	505	387.0	1176.3	17644	317.0	880
		300	724	1024	505	387.0	1176.3	35288	317.0	1058
		50	564	614	560	432.0	1465.7	7329	343.0	1062
CLSG-10006	1000 (10260)	150	664	814	560	432.0	1465.7	2986	343.0	1213
		300	814	1114	560	432.0	1465.7	43972	343.0	1439

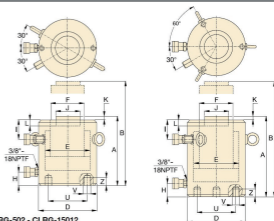
## CLRG-SERIES, HIGH TONNAGE CYLINDERS



\* Optional Tilt Saddle



Double-Acting,  
High Tonnage Cylinders



CLRG-502 - CLRG-15012

CLRG-2002 - CLRG-100012

Model No	Capacity ton	Stroke (mm)	Cylinder Capacity				Effective Area (cm <sup>2</sup> )		Oil Capacity		Collapsed Height A (mm)	Extended Height B (mm)	Outside Diameter D (mm)	Weight (kg)
			Push	Pull	Push	Pull	Push	Pull						
CLRG-502	50	50	539	269	77.0	38.5	385	192	162	212	130	17		
		100	539	269	77.0	38.5	770	385	212	312	130	20		
		150	539	269	77.0	38.5	1155	577	262	412	130	23		
		200	539	269	77.0	38.5	1540	770	312	512	130	27		
CLRG-1002	100	250	539	269	77.0	38.5	1924	962	362	612	130	31		
		300	539	269	77.0	38.5	2309	1155	412	712	130	34		
		100	929	433	132.7	61.9	664	309	179	229	165	29		
		100	929	433	132.7	61.9	1327	619	229	329	165	34		
CLRG-1502	150	100	929	433	132.7	61.9	1991	928	279	429	165	40		
		150	929	433	132.7	61.9	2655	1237	329	529	165	46		
		250	929	433	132.7	61.9	3318	1546	379	629	165	52		
		300	929	433	132.7	61.9	3982	1856	429	729	165	58		
CLRG-2002	200	100	1390	675	198.6	96.5	993	482	196	246	205	39		
		100	1390	675	198.6	96.5	1986	965	246	346	205	52		
		150	1390	675	198.6	96.5	2978	1447	296	446	205	65		
		200	1390	675	198.6	96.5	3971	1930	346	546	205	78		
CLRG-3002	300	100	1390	675	198.6	96.5	4964	2412	396	646	205	92		
		250	1390	675	198.6	96.5	5957	2895	446	746	205	105		
		150	1861	889	265.9	127.0	1330	635	312	462	235	55		
		150	1861	889	265.9	127.0	3989	1905	312	462	235	91		
CLRG-4002	400	150	1861	889	265.9	127.0	7977	3809	462	762	235	146		
		250	2565	1068	366.4	152.6	1832	763	235	285	275	89		
		150	2565	1068	366.4	152.6	5497	2289	335	485	275	136		
		300	2565	1068	366.4	152.6	10993	4578	485	785	275	207		
CLRG-5002	500	150	3193	1060	456.2	151.4	2281	757	322	372	310	184		
		150	3193	1060	456.2	151.4	6843	2270	422	572	310	232		
		300	3193	1060	456.2	151.4	13685	4541	572	872	310	303		
		300	3193	1060	456.2	151.4	19685	6812	672	1172	310	374		
CLRG-6002	600	150	3999	1354	559.9	193.5	2800	967	374	424	350	270		
		150	3999	1354	559.9	193.5	8399	2902	474	624	350	330		
		300	3999	1354	559.9	193.5	16797	5804	624	924	350	421		
		300	3999	1354	559.9	193.5	24796	8406	774	1224	350	512		
CLRG-8002	800	150	5114	1733	730.6	247.6	3653	1238	419	469	400	401		
		150	5114	1733	730.6	247.6	10959	3713	519	669	400	480		
		300	5114	1733	730.6	247.6	21918	7427	669	969	400	599		
		300	5114	1733	730.6	247.6	32877	11141	819	1269	400	718		
CLRG-10002	1000	150	5987	2068	855.3	295.4	4276	1477	429	479	430	474		
		150	5987	2068	855.3	295.4	12829	4431	529	679	430	565		
		300	5987	2068	855.3	295.4	25659	8862	679	979	430	701		
		300	5987	2068	855.3	295.4	38488	13293	829	1279	430	837		

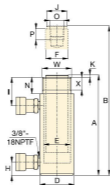
Capacity:  
50 - 1000 ton  
Stroke:  
50 - 300 mm  
Max. Pressure: 700 bar



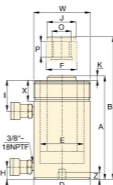
## RR-SERIES, DOUBLE ACTING CYLINDERS



Double-Acting,  
Long Stroke Cylinders



RR-1010 - RR-3014



RR-506 - RR-50048



RR-1006 - RR-30048  
No mounting holes on:  
RR-506, 5013  
RR-756, 7513  
RR-1502, 15013



RR-4006 - RR-50048

Base mounting hole location is for reference only, as it is affected by assembly.



Capacity:  
10 - 520 ton  
Stroke:  
57 - 1219 mm  
Maximum Operating Pressure: 700 bar



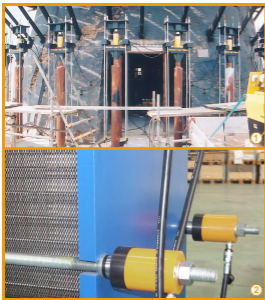
Model No	Capacity ton	Stroke (Inch)	Cylinder Capacity		Effective Area (cm <sup>2</sup> )		Oil Capacity (cm <sup>3</sup> )		Collapsed Height A (mm)	Extended Height B (mm)	Outside Diameter D (inch)	Weight (kg)
			Push	Pull	Push	Pull	Push	Pull				
RR-1010*	10	10	11.1	4	2.23	0.8	22.33	8	16.13	26.13	2.88	28
		12	11.1	4	2.23	0.8	26.8	9	18	30	2.88	31
RR-308*	30	8.25	32.5	6	6.51	3	53.67	25	15.25	23.5	4	40
RR-3014*		14.5	32.5	6	6.51	3	92.7	43	21.63	36.13	4	64
RR-506	50	6.13	55.3	11.8	11.06	3.4	67.77	21	13.06	19.19	5	67
RR-5013		13.13	55.3	11.8	11.06	3.4	145.17	44	20.06	33.19	5	115
RR-5020	75	20.13	55.3	11.8	11.06	3.4	222.56	68	28.88	49	5	150
RR-756		6.13	79.6	17.6	15.92	4.9	97.58	29	13.69	19.81	5.75	92
RR-7513	13.13	79.6	17.6	15.92	4.9	209	64	20.69	33.81	5.75	150	
RR-1006	100	6.63	103.2	48	20.65	9.6	136.93	63	14.06	20.69	7	135
RR-10013		13.13	103.2	48	20.65	9.6	271.17	126	20.63	33.75	7	205
RR-10018	150	18.13	103.2	48	20.65	9.6	374.44	174	27.06	45.19	7	260
RR-1502		2.25	153.5	74	30.71	14.8	69.11	33	7.72	9.44	8	110
RR-1506	200	6.13	153.5	74	30.71	14.8	188.28	91	15.19	21.31	8	205
RR-15013		13.13	153.5	74	30.71	14.8	403.27	194	22.2	35.31	8	275
RR-15032	300	32.13	153.5	74	30.71	14.8	986.84	475	43.94	76.06	8	525
RR-2006		6	221	112.5	44.21	22.5	265.28	135	16.94	22.94	9.75	325
RR-20013	400	13	221	112.5	44.21	22.5	574.78	293	23.94	36.94	9.75	440
RR-20018		18	221	112.5	44.21	22.5	795.85	396	30.13	48.13	9.75	450
RR-20024	500	24	221	112.5	44.21	22.5	1061	528	36.13	60.13	9.75	616
RR-20036		36	221	112.5	44.21	22.5	1592	792	48.13	84.13	9.75	845
RR-20048	600	48	221	112.5	44.21	22.5	2122	1056	60.13	108.13	9.75	1065
RR-3006		6	354.6	190	70.93	38	425.56	228	19.13	25.13	12.25	441
RR-30012	800	12	354.6	190	70.93	38	851.12	456	25.13	37.13	12.25	608
RR-30018		18	354.6	190	70.93	38	1277	684	31.13	49.13	12.25	776
RR-30024	1000	24	354.6	190	70.93	38	1702	912	37.13	61.13	12.25	1034
RR-30036		36	354.6	190	70.93	38	2553	1368	49.13	85.13	12.25	1385
RR-30048	1200	48	354.6	190	70.93	38	3405	1824	61.13	109.13	12.25	1720
RR-4006		6	475.4	255	95.09	51	570.51	306	21.19	27.19	14.13	670
RR-40012	1600	12	475.4	255	95.09	51	1141	612	27.19	39.19	14.13	880
RR-40018		18	475.4	255	95.09	51	1712	918	33.19	51.19	14.13	1000
RR-40024	2000	24	475.4	255	95.09	51	2282	1224	39.19	63.19	14.13	1317
RR-40036		36	475.4	255	95.09	51	3423	1836	51.19	87.19	14.13	1746
RR-40048	2400	48	475.4	255	95.09	51	4564	2448	63.19	111.19	14.13	2162
RR-5006		6	565.7	315	113.15	63	678	378	22.75	28.75	15.63	953
RR-50012	3200	12	565.7	315	113.15	63	1358	756	28.75	40.75	15.63	1300
RR-50018		18	565.7	315	113.15	63	2037	1134	34.75	52.75	15.63	1500
RR-50024	4000	24	565.7	315	113.15	63	2716	1512	40.75	64.75	15.63	1800
RR-50036		36	565.7	315	113.15	63	4074	2268	52.75	88.75	15.63	2210
RR-50048	48	565.7	315	113.15	63	5431	3024	64.75	112.75	15.63	2700	



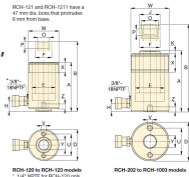
## RCH-SERIES, HOLLOW PLUNGER CYLINDERS



- Hollow plunger design allows for both, pull and push forces
- Single-acting, spring return
- Nickel-plated, floating center tube on models over 20 ton increases product life
- Baked enamel finish for increased corrosion resistance
- Collar threads for easy fixturing
- RCH-120 includes AR-630 coupler and has 1/4" nptf port
- RCH-121 and RCH-1211 have FZ-1630 reducer and AR-630 coupler, all other models feature CR-400 coupler.



### Versatility in Testing, Maintenance and Tensioning Applications



Single-Acting,  
Hollow Plunger Cylinders



Capacity:  
13 - 95 ton  
Stroke:  
8 - 155 mm  
Center Hole Diameter: 19.6 - 79.0 mm  
Maximum Operating Pressure: 700 bar

Model No.	Capacity ton (kN)	Stroke (mm)	Collapsed Height A (mm)	Center Hole Dia.	Outside Diameter D (mm)	Bore Diameter E (mm)	Plunger Diameter F (mm)	Effective Area (cm <sup>2</sup> )	Oil Capacity (cm <sup>3</sup> )	Weight (kg)
RCH-120	13 (125)	8	55	19.6	69	54,1	35,1	17,9	14	1,5
RCH-121*		42	120		69	54,1	35,1	17,9	7,5	2,8
RCH-1211		42	120		69	54,1	35,1	17,9	7,5	2,8
RCH-123		76	184		69	54,1	35,1	17,9	13,6	4,4
RCH-202*	20 (215)	49	162	26.9	98	73,1	54,1	30,7	150	7,7
RCH-206		155	306		98	73,1	54,1	30,7	476	14,1
RCH-302*	30 (326)	64	178	33.3	114	88,9	63,5	46,6	298	10,9
RCH-306		155	330		114	88,9	63,5	46,6	722	21,8
RCH-603*		76	247		159	123,9	91,9	82,3	626	28,1
RCH-606		60 (576)	153		323	159	123,9	91,9	82,3	1259
RCH-1003*	95 (931)	76	254	79	212	165,1	127,0	133,0	1011	63,0

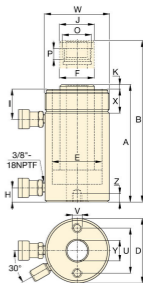
## RRH-SERIES, HOLLOW PLUNGER CYLINDERS



- Relief valves prevent damage in case of overpressurisation
- Baked enamel finish for increased corrosion resistance
- Collar threads enable easy fixturing (except RRH-1001 and RRH-1508)
- Double-acting version for fast retraction
- Nickel-plated, floating center tube increases product life
- Hollow plunger allows for both pull and push forces
- CR-400 coupler and dust cap included on all models
- Plunger wiper reduces contamination, extending cylinder life.



### Versatility in Testing, Maintenance and Tensioning Applications



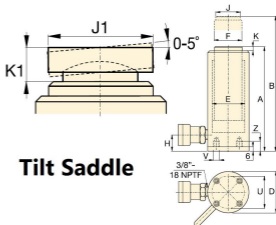
Capacity: 30 - 145 ton  
 Stroke: 38 - 258 mm  
 Center Hole Diameter:  
 33.3 - 79.2 mm  
 Maximum Operating Pressure:  
 700 bar

Model No.	Capacity		Oil Capacity		Effective Area		Cylinder Capacity		Weight (kg)
	ton	Stroke (mm)	(cm <sup>3</sup> )	(cm <sup>3</sup> )	(cm <sup>2</sup> )				
RRH-307	30	178	829	541	46,6	30,4	326	213	21
RRH-3010		258	1202	784	46,6	30,4	326	213	27
RRH-603	60	89	733	482	82,3	54,2	576	380	28
RRH-606		166	1366	900	82,3	54,2	576	380	35
RRH-6010	95	257	2115	1393	82,3	54,2	576	380	45
RRH-1001		38	505	333	133,0	87,4	931	612	33
RRH-1003	145	76	1011	666	133,0	87,4	931	612	61
RRH-1006		153	2035	1337	133,0	87,4	931	612	79
RRH-10010	145	257	3420	2246	133,0	87,4	931	612	106
RRH-1508		203	4144	2083	204,1	102,6	1429	718	111

## RAC-SERIES, ALUMINIUM CYLINDERS



- Composite bearings prevent metal-to-metal contact, increasing cylinder life and resistance to side-loads of up to 10%
- Hard-Coat finish on all surfaces resists damage and extends cylinder life
- Handles included on all models
- Steel base plate and saddle for protection against load-induced damage
- Integral stop ring prevents plunger over-travel and is capable of withstanding the full cylinder capacity
- High strength return spring for rapid cylinder retraction
- CR-400 coupler and dustcap included on all models
- All cylinders meet ASME B-30.1 and ISO 10100 standards.



**Tilt Saddle**

### Lightweight for Maximum Portability



Capacity:  
20 - 150 ton  
Stroke:  
50 - 250 mm  
Maximum Operating Pressure: 700 bar

### Single-Acting, Lightweight Aluminium Cylinders

Model No.	Capacity ton (kN)	Stroke (mm)	Oil Capacity (cm <sup>3</sup> )	Effective Area (cm <sup>2</sup> )	Collapsed Height A (mm)	Extended Height B (mm)	Outside Diameter D (mm)	Bore Diameter E (mm)	Plunger Diameter F (mm)	Weight (kg)
RAC-202	20 (218)	50	156	31,2	174	224	85	63	50	3,6
RAC-204		100	312	31,2	224	324	85	63	50	4,1
RAC-206		150	468	31,2	274	424	85	63	50	4,6
RAC-302	30 (309)	50	221	44,2	181	231	100	75	60	4,5
RAC-304		100	442	44,2	231	331	100	75	60	5,2
RAC-306		150	663	44,2	281	431	100	75	60	5,9
RAC-502	50 (496)	50	354	70,9	186	236	130	95	80	8,5
RAC-504		100	709	70,9	236	336	130	95	80	9,8
RAC-506		150	1063	70,9	286	436	130	95	80	11,1
RAC-1004	100 (1002)	100	1431	143,1	271	271	180	135	110	19,6
RAC-1006		150	2147	143,1	321	471	180	135	110	21,9
RAC-1008		200	2863	143,1	371	571	180	135	110	24,2
RAC-1506	150 (1589)	150	3405	227,0	343	493	230	170	140	33,3

## RAR-SERIES, ALUMINIUM CYLINDERS

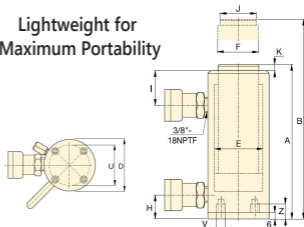


**Capacity:**  
20 - 150 ton  
**Stroke:**  
50 - 250 mm  
**Maximum Operating Pressure: 700 bar**

- Double-acting for rapid retraction, regardless of hose lengths or system losses
- Composite bearings increase cylinder life and sideload resistance
- Hard-Coat finish on all surfaces resists damage and extends cylinder life
- Handles included on all models
- Steel base plate and saddle for protection against load-induced damage
- Integral stop ring prevents plunger over-travel and is capable of withstanding the full cylinder capacity
- Built-in safety valve prevents accidental over-pressurization.



**Lightweight for Maximum Portability**



### Double-Acting, Lightweight Aluminium Cylinders

Model No.	Capacity ton	Stroke (mm)	Collapsed Height A (mm)	Extended Height B (mm)	Outside Diameter D (mm)	Bore Diameter E (mm)	Plunger Diameter F (mm)	Cylinder Capacity		Oil Capacity (cm <sup>3</sup> )		Effective Area (cm <sup>2</sup> )		Weight (kg)
								Push	Pull	Push	Pull	Push	Pull	
RAR-502	50	50	201	251	145	95	75	496	187	354	134	70,9	26,7	11,1
RAR-504		100	251	351	145	95	75	496	187	709	267	70,9	26,7	12,7
RAR-506		150	301	451	145	95	75	496	187	1063	401	70,9	26,7	14,3
RAR-1004	100	100	301	401	185	135	90	1002	557	1431	795	143,1	79,5	19,3
RAR-1006		150	351	501	185	135	90	1002	557	2147	1193	143,1	79,5	22,2
RAR-1008		200	401	601	185	135	90	1002	557	2863	1590	143,1	79,5	25,1
RAR-1506	150	150	348	498	230	170	110	1589	924	3405	1980	227,0	132,0	33,2

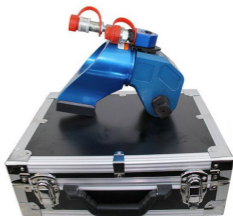
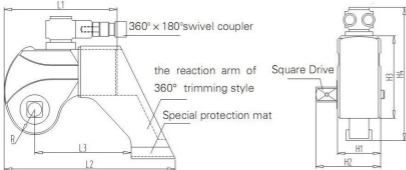
## AL-TI ALLOY SQUARE DRIVE HYDRAULIC TORQUE WRENCH

### Design

- Compact, Al-Ti Alloy construction for a small operating radius
- Robust design with minimal parts enables easy on-site maintenance without special tools
- Lightweight, ergonomic design for easy handling even in applications where access is limited
- Optimised strength-to-weight ratio



Maximum torque at 700 bar:  
48,666 Nm  
Square Drive Range:  
3/4 - 2,1/2inch  
Nut Size Range:  
24 - 165 mm  
Maximum Operating Pressure:  
700 bar



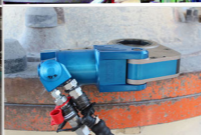
Model No.	1MXTA	3MXTA	5MXTA	8MXTA	10MXTA	20MXTA	25MXTA	35MXTA
Torque Value(N.M)	183-1837	451-4512	752-7528	1078-10780	1551-15516	2666-26664	3472-34725	4866-48666
Bolt Diameter	16-36	22-48	27-56	30-64	36-72	42-90	48-100	64-115
Nut A/F(mm)	24-55	34-75	41-85	46-95	55-105	65-110	75-145	95-165
L1	133.5	169	202.5	216	237.5	299.5	313	361.5
L2	185.5	242	283.5	309	340.5	466.5	461	496.5
H1	50	68	80	90	100	120	137	153
H2	72	95	123	134	142	183	200	216
H3	95.5	127	149	167	182	220	247	282
H4	131	176.5	198.5	216.5	231.5	269.5	296.5	331.5
R1	26	34	39	47	51	59	66	77
R2	99	134	152	171	174	250.5	250.5	27
Square Drive	3/4"	1	1-1/2"	1-1/2"	1-1/2"	2-1/2"	2-1/2"	2-1/2"



## XLCT SERIES LOW PROFILE HEXAGON WRENCHES

### Design

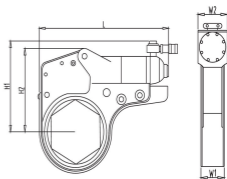
- Cylinders and low profile cassettes have been engineered to give ultra slim, compact low clearance tooling with a small nose radius
- Robust design with minimal parts enables easy on-site maintenance without special tools
- Optimized strength-to-weight ratio
- Fast operation due to the large nut rotation per wrench cycle (30 degree rotation angle) and rapid return stroke.



Maximum Torque at 700 bar:  
41882 Nm  
Hexagon Range:  
16 -115 mm  
Maximum Operating Pressure:  
700 bar



Model No.	2XLCT	4XLCT	8XLCT	14XLCT	30XLCT
Torque Value	232-2328	585-5858	1094-10941	1852-18521	4188-41882
Bolt Dia. (mm)	16-36	24-42	30-64	33-76	76-115
Nut A/F (mm)	24-55	36-65	46-95	50-110	110-165
L	196.4	245	300	361	430
H1	125.9	177	207	239	303
H2	102.3	135.7	169	204	272
W1	32	42	53	64	85
W2	51	66	83	99	131



## STEEL SQUARE DRIVE HYDRAULIC TORQUE WRENCHES

### Simplicity

- Includes handle to improve tool handling and safety
- 360° click-on, multi-position reaction arm
- Push button square drive release to quickly reverse the square drive for tightening or loosening
- Fine tooth ratchet prevents tool "lock-on"
- Single 360° hydraulic swivel manifold, complete with screw lock couplings, increases wrench and hose manoeuvrability.

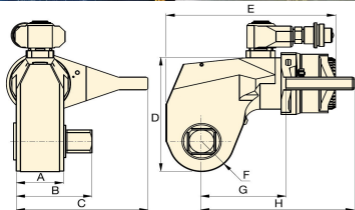


Maximum Torque at 700 bar:  
34.079 Nm

Square Drive Range:  
3/4 - 2,1/2inch

Nose Radius:  
25,0 - 63,5 mm

Maximum Operating Pressure:  
700 bar



Size (mm)								Weight (Kg)	Model No.	Maximum Torque		Square Drive	Heavy-Duty Sockets	
A	B	C	D	E	F	G	H			(Nm)	(Ft. lbs)	Size	METRIC SIZE (mm)	IMPERIAL SOCKETS
39	65	108	97	136	25	70	129	2.7	S1500	1898	1440	3/4	19 - 50	3/4 - 2
48	80	135	128	173	33	90	161	5	S3000	4339	3200	1	19 - 100	3/4 - 3 7/8
55	92	169	157	192	40	110	188	8.5	S6000	8144	6010	1½	36 - 115	17/16 - 4 5/8
72	114	197	190	228	49.5	133	229	15	S11000	14914	11000	1½	36 - 115	17/16 - 4 5/8
89	143	246	244	287	63.5	182	295	31	S25000	25140	25140	2½	65 - 155	2 7/16 - 6 1/8

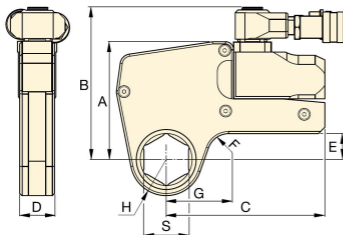
## W SERIES LOW PROFILE HEXAGON WRENCHES

### Simplicity

- Includes handle to improve tool handling and safety
- No tools are needed for changing the hexagon cassettes
- Innovative, pinless wrench construction incorporates quick release cylinder and automatic crank engagement
- Single 360° hydraulic swivel manifold complete with screw lock couplings increases wrench and hose manoeuvrability.



Maximum Torque at 700 bar:  
47450 Nm  
Hexagon Range:  
24-115 mm / 1,1/8 - 4,5/8 "  
Nose Radius:  
31 - 87,5 mm



Model No.	Reducer		Max.Torque Value		Min.Torque Value	
	Hex Nut Size Range		(Nm)	(Ft.lbs)	(Nm)	(Ft.lbs)
W2000	30 - 60	1 1/8 - 2 1/4	2712	2000	271	200
W4000	36 - 85	1 5/16 - 3 1/8	5423	4000	542	400
W8000	50 - 105	1 7/8 - 4 1/8	10846	8000	1084	800
W15000	65 - 115	2 7/16 - 4 5/8	20337	15000	2033	1500
W22000	75 - 135	2 15/16 - 5 3/8	30510	22500	3050	2250
W35000	80 - 155	3 1/8 - 6 1/8	47450	35000	4745	3500

Size (mm)						Without Hexagon		Model No.
A	B	C	D	E	F	Weight (kg)		
109	141	148	32	24	20	1.4		W2000
136	167	178	41	33	20	2		W4000
172	205	208	53	42	25	3		W8000
207	240	253	63	50	20	5		W15000
227	266	297	77	48	35	7.7		W22000
268	301	345	91	69-73	50	11.4		W35000





## LIGHT WEIGHT HAND PUMPS & AIR PUMPS

### 700 bar Lightweight Hand Pump



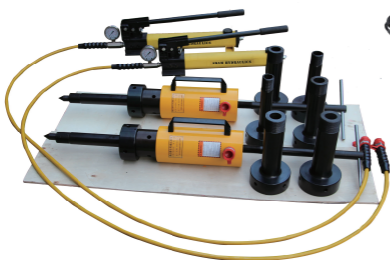
Model No.	Pump Type	Usable Oil Capacity (ml)	Pressure Rating (bar)		Oil Displacement per Stroke (ml)		Max. Handle Effort (kg)	Piston Stroke (mm)
			1st stage	2nd stage	1st stage	2nd stage		
P-141	Single Speed	327	-	700	-	0.9	32.7	12.7
P-391		901	-	700	-	2.47	38.6	25.4
P-142*	Double Speed	327	13	700	3.62	0.9	35.4	12.7
P-202		901	13	700	3.62	0.9	28.6	12.7
P-392*		901	13	700	11.26	2.47	42.2	25.4
P-802		2540	27	700	39.33	2.47	43.1	25.4
P-842		2540	27	700	39.33	2.47	43.1	25.4

### Ultra-High Pressure Hand Pump pressure: 1600- 4000 bar

Model No.	Description	Pressure (bar)		Oil Displacement per stroke(ml)		Outlet	Gauge Port	Oil Capacity (ml)
		1st Stage	2nd Stage	1st Stage	2nd Stage			
AP-1600	Ultra High Pressure	20	1600	32	1.6	G 1/4	G 1/2	2200
AP-2000		20	2000	32	1.6	G 1/4	G 1/2	2200
AP-2800	Hydraulic Hand Pump	20	2800	32	0.9	G 1/4	G 1/2	2200
AP-3000		20	3000	32	0.9	G 1/4	G 1/2	2200
AP-4000		20	4000	32	0.9	G 1/4	G 1/2	2200

### Air Hydraulic Pumps

Model No.	Output Capacity (cu.in)	Flow Rate(cu.in/min)		Size (in)			Material	Weight (lbs)
		Low Pressure	High Pressure	Length	Width	Height		
A1501	140	49.5	7.6	12.3	6.7	7.5	industrial plastic	26
A1502	98	49.5	7.6	10.3	5.3	7.3	Aluminium alloy	19



### Electric Hydraulic Pumps

*for Hydraulic Cylinders*

AEM: Manual Valve Type

AEE: Electric Valve Type

Model No.	Working Pressure (Bar)	flow rate(L/min)		Voltage (v)	Motor power (kw)	Valve Type	Oil Capacity (Kg)	Weight (Kg)
		Low pressure	high pressure					
AEM-75	700	2	1	380/220	0.75	Manual Valve	20L	25
AEE-75	700	2	1	380/220	0.75	Electric valve	20L	25
AEM-220	700	3	2	380/220	2.2	Manual Valve	30L	78
AEE-220	700	3	2	380/220	2.2	Electric valve	30L	78
AEM-550	700	9	5	380/220	5.5	Manual Valve	100L	160
AEE-550	700	9	5	380/220	5.5	Electric valve	100L	160

### Electric Hydraulic Pumps

*for Hydraulic Torque Wrenches*

Model No.	Working Pressure	Flow Rate	Voltage	Power	Valve Type	Oil Capacity	Size	Weight
HPC-150	700 bar	1.1 L/min	AC220V	1.5KW	Solenoid Valve	8 L	45*32*54cm	36.5KG
APC-220	700 bar	2.0 L/min	AC220V	2.2KW	Solenoid Valve	16L	48*48*39cm	53.8KG

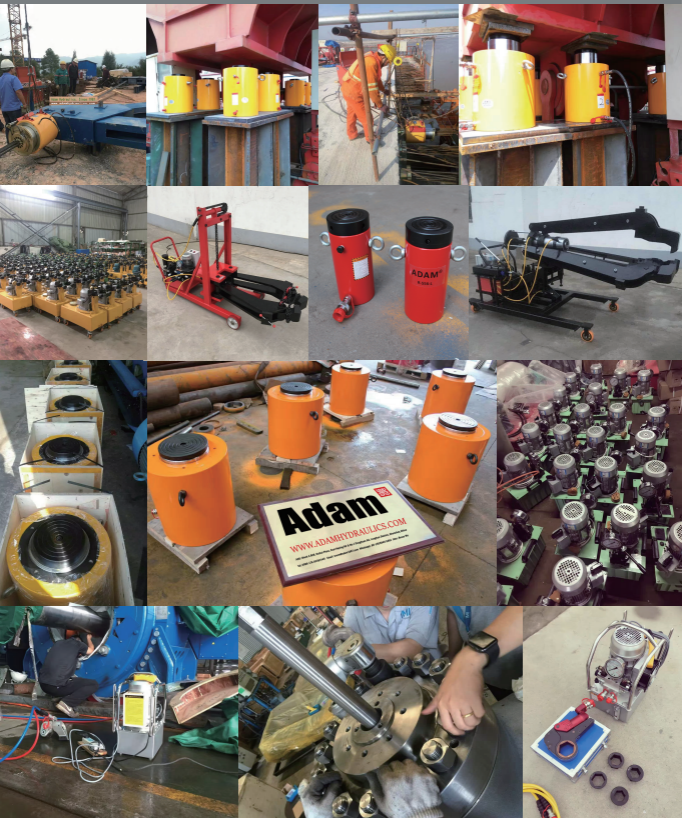
\*All of the powerpacks can be customized, Power, Flow Rate, Voltage and so on\*

### Stressed Jacking System

*Stressed Jack Parameters as below*

Model No.	Tensile Force (KN)	Prestress Pressure (Mpa)	Tensile Area (m <sup>2</sup> )	Return Area (m <sup>2</sup> )	Return Pressure (Mpa)	Pebstrate Hole Dia. (mm)	Stroke (mm)	Dimension O'D (mm)	Weight (kg)
ADA70B	705	51	0.01382	0.00636	<25	60	200	188*330	40
ADA100B	973	51	0.01908	0.00534	<25	78	200	216*337	60
ADA150B	1493	51	0.02927	0.01609	<25	102	200	283*376	117
ADA200B	1998	53	0.03769	0.02168	<25	120	200	310*378	130
ADA250B	2480	54	0.04594	0.02803	<25	140	200	345*382	188
ADA300B	3011	51	0.05904	0.03518	<25	145	200	385*382	230
ADA350B	3529	52	0.06786	0.03463	<25	165	200	410*389	280
ADA400B	3957	52	0.07611	0.04595	<25	175	200	440*389	315
ADA450B	4490	51	0.08804	0.05788	<25	175	200	465*413	364
ADA500B	5026	50	0.10050	0.04775	<25	196	200	495*418	445
ADA500B	6050	50	0.12100	0.06830	<25	196	200	530*443	550
ADA650B	6566	50	0.12130	0.06291	<25	240	200	570*445	610

## CUSTOMIZED PRODUCTS AND APPLICATION



**CYLINDER  
PUMPS  
WRENCHES  
BOLT TOOLS  
NEW SOLUTIONS  
ON-SITE SERVICE  
POWER SOLUTION  
ADAM HYDRAULICS  
SINCE 1987™  
WWW.ADAM1987.COM**

Adam



**SHENZHEN ADAM TECHNOLOGY CO.,LTD**

Add: Block A 808, Huihai Plaza, East Heping Rd, Shenzhen, China  
Bruce Wu, Mob: 8617665391446 Email: bruce@adam1987.com